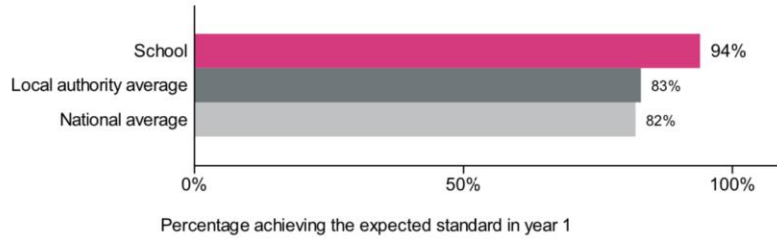


Mayflower Community Academy Year 1 Phonics Screening Test 2018-2019

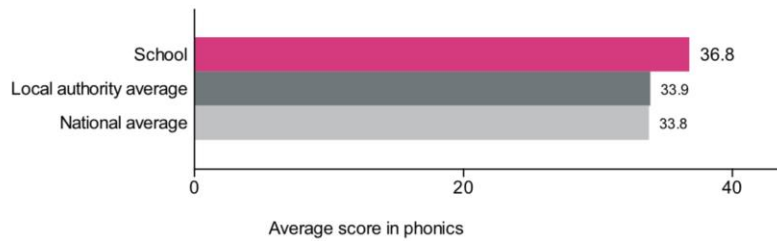
Percentage achieving the expected standard in phonics

Number of pupils = 53



Phonics average score

Number of pupils = 53



Mayflower Academy

2019 KS1 VA

Overview

KS1 Attainment 2019 · Actual results

60 pupils

% Expected Standard + (Re, Wr, Ma)

% Higher Standard (Re, Wr, Ma)

62%

3%



In line with the national average (65%) ◀



In line with the national average (11%) ◀

KS1 Progress 2019 · Value Added

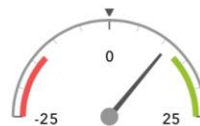
58 matched pupils

% Expected Standard + (Re, Wr, Ma)

% Higher Standard (Re, Wr, Ma)

+11%

+0%



In line with the national average (0%) ◀



In line with the national average (0%) ◀

Attainment & progress

KS1 Attainment 2019

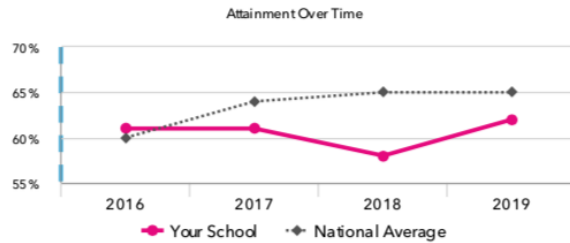
60 pupils

% Expected Standard + (Re, Wr, Ma)

62%



In line with the national average (65%)



KS1 Progress 2019

58 matched pupils

% Expected Standard + (Re, Wr, Ma)

+11%



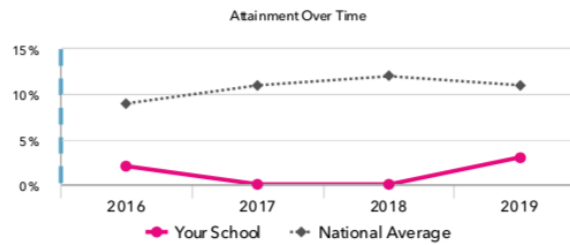
In line with the national average (0%)

% Higher Standard (Re, Wr, Ma)

+0%



In line with the national average (0%)



% Higher Standard (Re, Wr, Ma)

3%



In line with the national average (11%)

KS1 performance summary

| | Actual results | | | Pupil progress | | |
|------------------------------------|-------------------------------------|--------------------------------------|--------------------------------------|----------------|------|------|
| | 2017 | 2018 | 2019 | 2017 | 2018 | 2019 |
| Number of Pupils / % Matched | 56 | 60 | 60 | 100% | 100% | 97% |
| % Expected Standard + (Re, Wr, Ma) | 61% | 58% | 62% | +6% | +1% | +11% |
| % Higher Standard (Re, Wr, Ma) | 0% - | 0% - | 3% | -3% | -4% | +0% |
| % Expected Standard + Reading | 73% | 70% | 72% | +4% | -1% | +8% |
| % Higher Standard Reading | 5% - | 12% - | 12% - | -7% | -2% | +0% |
| % Expected Standard + Writing | 63% | 63% | 63% | +2% | +0% | +5% |
| % Higher Standard Writing | 0% - | 5% - | 8% | -6% | -1% | +3% |
| % Expected Standard + Maths | 73% | 67% | 72% | +6% | -6% | +6% |
| % Higher Standard Maths | 2% - | 5% - | 10% - | -7% | -7% | +1% |

