

# Overview

## KS2 Attainment 2019 · Actual results

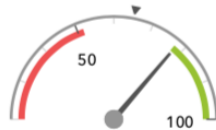
55 pupils

Average Scaled Score (Re, Ma)

% Expected standard+ (Re, Wr, Ma)

105.4 ↓

78% +



In line with the national average (104.7) ◀

Significantly above the national average (65%) ◀

## KS2 Progress 2019 · Value Added

54 matched pupils

Average Scaled Score (Re, Ma)

% Expected standard+ (Re, Wr, Ma)

+2.9 + ↓

+24% +



Significantly above the national average (0) ◀

Significantly above the national average (0%) ◀

# Subjects

## KS2 subject performance 2019

	Actual results			Pupil progress			Actual results over time		
	2017	2018	2019	2017	2018	2019			
Number of Pupils / % Matched	57	56	55	98%	96%	98%			
<b>Reading</b>									
% Expected standard+	68% ↓	88% ↑	82%	+24% ↓	+19% ↑	+19% ↑			
% Higher standard	7% ↓	57% ↑	18% ↓	-2% ↓	+31% ↑	-2% ↓			
Scaled Score	103 ↓	110 ↑	104 ↓	+3.3 ↓	+5.5 ↑	+2.0 ↓			
<b>Writing</b>									
% Expected standard+	86%	88%	89%	+38% ↑	+15% ↑	+20% ↑			
% Higher standard	14%	30% ↑	16%	+9% ↑	+9% ↑	+2%			
Scaled Score	102	104 ↑	103	+6.2 ↑	+3.3 ↓	+3.2 ↑			
<b>Maths</b>									
% Expected standard+	51% ↓	93% ↑	91% ↑	+0% ↓	+26% ↑	+20% ↑			
% Higher standard	2% ↓	54% ↑	27% ↓	-5% ↓	+31% ↑	+7% ↓			
Scaled Score	101 ↓	110 ↑	107 ↓	+1.6 ↓	+6.3 ↑	+3.9 ↓			
<b>Grammar, Punctuation &amp; Spelling</b>									
% Expected standard+	56% ↓	80% ↑	71%	+7%	+9%	+2%			
% Higher standard	7% ↓	34% ↑	20% ↓	-4%	+1%	-7%			
Scaled Score	101 ↓	108 ↑	104 ↓	-0.0 ↓	+2.0 ↑	+0.1			
<b>Science</b>									
% Expected standard+	75%	82%	84%	-	-	-			

# Attainment & progress

## KS2 Attainment 2019

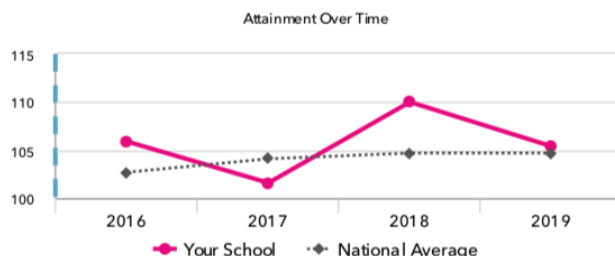
55 pupils

Average Scaled Score (Re, Ma)

105.4 ↓



In line with the national average (104.7)

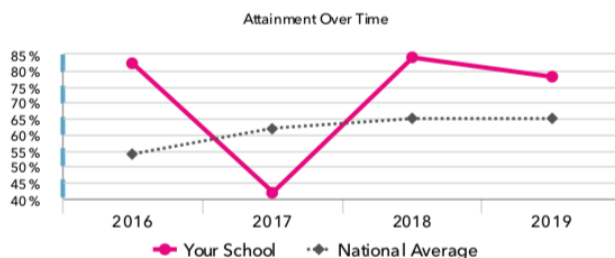


% Expected standard+ (Re, Wr, Ma)

78% +



Significantly above the national average (65%)



## KS2 Progress 2019

54 matched pupils

Average Scaled Score (Re, Ma)

+2.9 + ↓



Significantly above the national average (0)

% Expected standard+ (Re, Wr, Ma)

+24% +



Significantly above the national average (0%)

## KS2 performance summary

	Actual results			Pupil progress		
	2017	2018	2019	2017	2018	2019
Number of Pupils / % Matched	57	56	55	98%	96%	98%
% Expected standard+ (Re, Wr, Ma)	42% ↓	84% ↑	78% +	+10% ↓	+28% ↑	+24% +
% Higher standard (Re, Wr, Ma)	2%	25% ↑	9% ↓	-0%	+12% +	+1%
Average Scaled Score (Re, GPS, Ma)	101.2 ↓	109.4 ↑	105.4 ↓	+1.7 ↓	+5.1 ↑	+2.3 ↓
Average Scaled Score (Re, Ma)	101.6 ↓	110.0 ↑	105.4 ↓	+2.5 ↓	+5.9 ↑	+2.9 ↓
% Expected standard+ Reading	68% ↓	88% ↑	82%	+24% ↓	+19% +	+19% +
% Higher standard Reading	7% ↓	57% ↑	18% ↓	-2% ↓	+31% ↑	-2% ↓
Scaled Score Reading	102.5 ↓	109.9 ↑	104.0 ↓	+3.3 ↓	+5.5 +	+2.0 ↓
% Expected standard+ Writing	86%	88%	89%	+38% +	+15% +	+20% +
% Higher standard Writing	14%	30% ↑	16%	+9% +	+9%	+2%
Scaled Score Writing	101.8	104.1 +	102.7	+6.2 +	+3.3 ↓	+3.2 +
% Expected standard+ Maths	51% ↓	93% ↑	91% +	+0% ↓	+26% ↑	+20% +
% Higher standard Maths	2%	54% ↑	27% ↓	-5%	+31% ↑	+7% ↓
Scaled Score Maths	100.7 ↓	110.2 ↑	106.7 ↓	+1.6 ↓	+6.3 ↑	+3.9 ↓
% Expected standard+ Grammar, Punctuation & Spelling	56%	80% ↑	71%	+7%	+9%	+2%
% Higher standard Grammar, Punctuation & Spelling	7%	34% ↑	20% ↓	-4%	+1%	-7%
Scaled Score Grammar, Punctuation & Spelling	100.9 ↓	107.6 ↑	104.1 ↓	-0.0 ↓	+2.0 +	+0.1
% Expected standard+ Science	75%	82%	84%	-	-	-



